

ASSEMBLY INSTRUCTIONS

Malaguti



Date: 10.05.2019 Version: 1

ASSEMBLY INSTRUCTIONS Madison 300

1. Cut the straps with a knife



2. Remove the carton



3. Remove the packaging iron frame, remove the protective carton, dust bag, drawstring, and then remove the vehicle from the iron frame

① Remove the iron frame

② Remove the protective tray

③ Remove the dust bag



④ Take off the drawstring

⑤ Take off the drawstring

④ Take off the drawstring

Report Nr.:	-	Created by:	
Model:	Madison 300	Checked by:	
VIN Nr.:			
Page 1/5			

ASSEMBLY INSTRUCTIONS

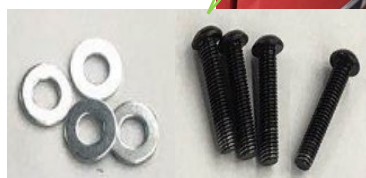
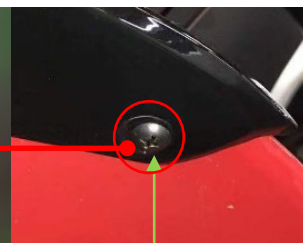
Malaguti



Date: 10.05.2019 Version: 1

ASSEMBLY INSTRUCTIONS Madison 300

4.Assembling the left and right hand protection cover
Use 4 pieces of $\Phi 6$ washers, 4 pieces of M6 \times 30 bolts, 2 pieces of clips, 2 pieces of self-tapping bolts to mount the left and right hand protection covers on the whole vehicle. (The mounting material is in the accessory box)



Report Nr.:	-	Created by:	
Model:	Madison 300	Checked by:	
VIN Nr.:			
Page 2/5			

ASSEMBLY INSTRUCTIONS

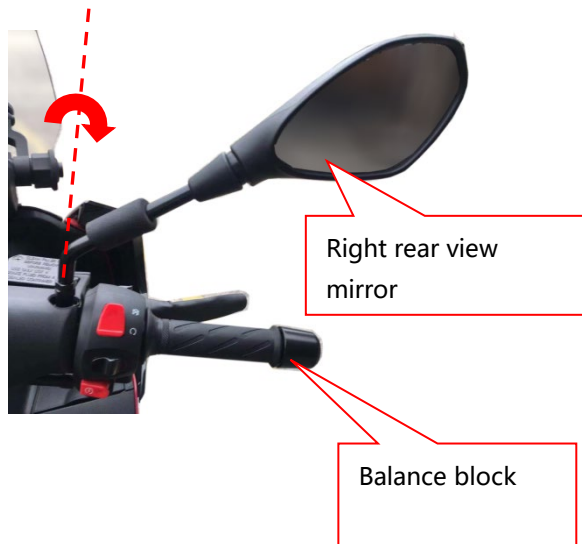
Malaguti



Date: 10.05.2019 Version: 1

ASSEMBLY INSTRUCTIONS Madison 300

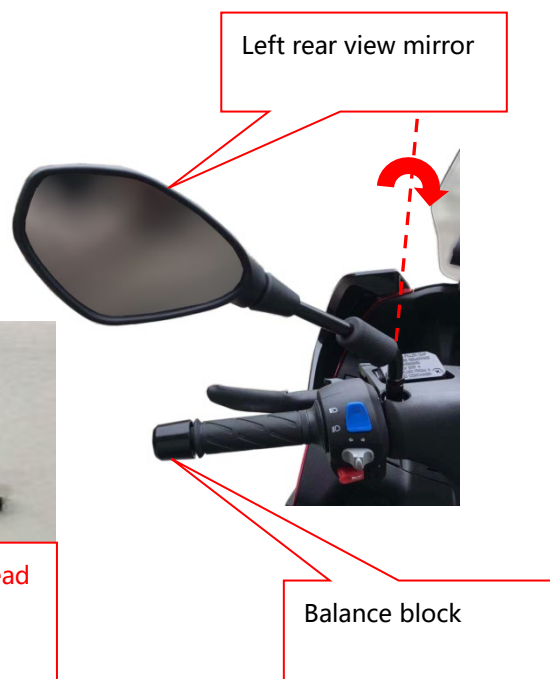
5. Install the left/right rear view mirror (clockwise)



6. Attach the balance block to the handlebar with 2 hexagonal semi-recessed head self-locking screws M6x30;



Hexagonal semi-recessed head self-locking screws M6x30



Report Nr.:	-	Created by:	
Model:	Madison 300	Checked by:	
VIN Nr.:			
Page 3/5			

ASSEMBLY INSTRUCTIONS

Malaguti



Date: 10.05.2019 Version: 1

ASSEMBLY INSTRUCTIONS Madison 300

7. Assemble the front windshield

Plug a cushioning rubber onto the windshield bracket



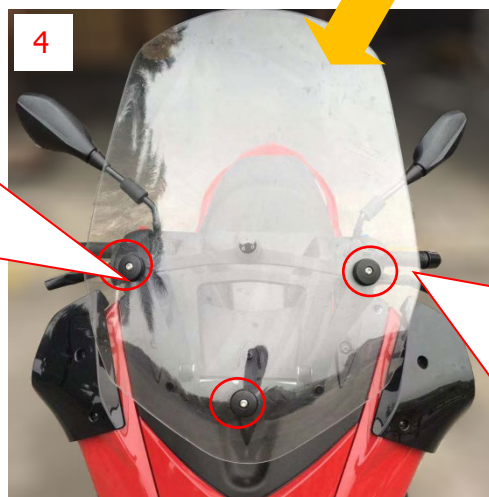
Fit the three aprons on the windshield



Fit the three bushings on the windshield knob



Fit the windshield assembly on the bracket with 3 bolts M6×30 and 3 self-locking nuts M6



Report Nr.:	-	Created by:	
Model:	Madison 300	Checked by:	
VIN Nr.:			
Page 4/5			

ASSEMBLY INSTRUCTIONS

Malaguti



Date: 10.05.2019 Version: 1

ASSEMBLY INSTRUCTIONS Madison 300



1

Open the
seat cushion



2

Place the battery in the
battery case as shown in
the illustration, then close
the battery cover and
secure it with a rubber
band.

**8. After the end, check the vehicle according
to the PDI.**

Report Nr.:	-	Created by:	
Model:	Madison 300	Checked by:	
VIN Nr.:			
Page 5/5			