

ASSEMBLY INSTRUCTIONS

Malaguti



Date: 10.05.2019 Version: 1

ASSEMBLY INSTRUCTIONS XTM 125/XSM 125

1. Cut the straps with a knife



2. Remove the carton



3. Remove the straps of the fixed handlebar



4. Remove the straps of the fixed upper plate

Report Nr.:	-	Created by:	
Model:	XTM 125/XSM 125	Checked by:	
VIN Nr.:			
Page 1/4			

ASSEMBLY INSTRUCTIONS

Malaguti



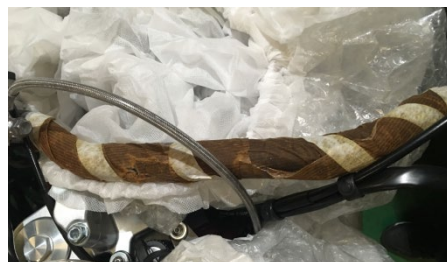
Date: 10.05.2019 Version: 1

ASSEMBLY INSTRUCTIONS XTM 125/XSM 125

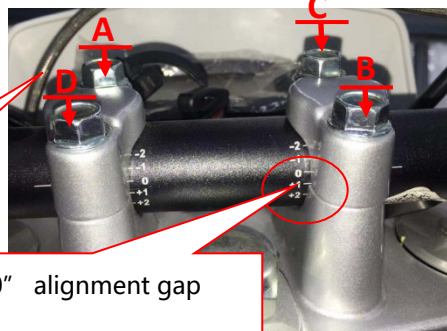
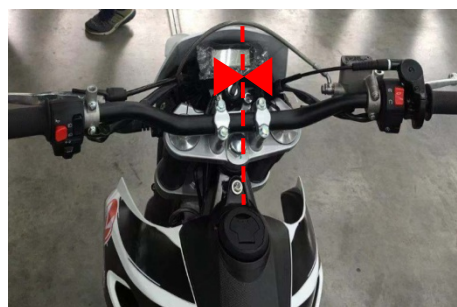
5. Remove the dust bag, protective carton, paper partition, and then remove the vehicle from the iron frame



6. Remove the protective paper



7. Install the handlebar on the upper board;
7_1. First remove the clamps, place the handlebar on the upper seat, pre-tighten the screws diagonal, then adjust concerning the angle and the left and right symmetry (the default point "0" is aligned with the gap)
7_2. Diagonal fastening of the bolts, afterwards torque calibration with torque wrench: 17-19 Nm



* Fastening sequence A-B-C-D
(diagonal fastening);
*Torque: 17-19 Nm

Default "0" alignment gap

Report Nr.:	-	Created by:	
Model:	XTM 125/XSM 125	Checked by:	
VIN Nr.:			
Page 2/4			

ASSEMBLY INSTRUCTIONS

Malaguti



Date:

10.05.2019

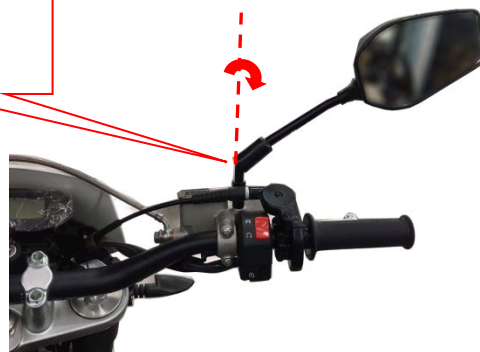
Version:

1

ASSEMBLY INSTRUCTIONS XTM 125/XSM 125

8. Install the left/right rear view mirror (clockwise)

Right rear view mirror



Left rear view mirror



Report Nr.:

-

Created by:

Model:

XTM 125/XTM 125

Checked by:

VIN Nr.:

Page 3/4

ASSEMBLY INSTRUCTIONS

Malaguti

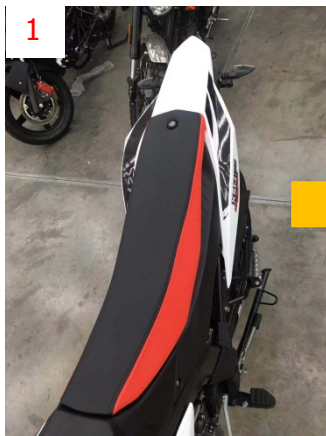


Date: 10.05.2019 Version: 1

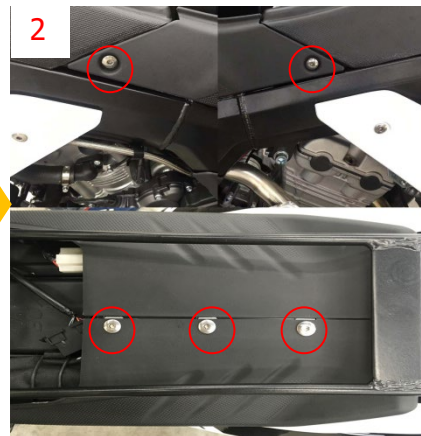
ASSEMBLY INSTRUCTIONS XTM 125/XSM 125

9. Pack the battery

* Disassemble some parts before installing the battery (see the illustration on the right) so that the battery can be placed in the battery case.



Remove the seat cushion



Remove the 5 bolts from the above figure so that the left and right side covers can be removed.



Install the battery and reinstall the parts in reverse



Remove the two bolts from the above figure to remove the bracket

10. After the end, check the vehicle according to the PDI

Report Nr.:	-	Created by:	
Model:	XTM 125/XSM 125	Checked by:	
VIN Nr.:			
Page 4/4			